

BROKK

Husqvarna



Brokk comparison chart

BROKK

Weight

Width min

Height min

Motor output

Recommended
max weight
attachment

Vertical reach
(incl. breaker)

Horizontal reach
(incl. breaker)

Brokk 40



384 kg
(846 lbs)

600 mm
(23.6 in)

940 mm
(37 in)

0-4 kW

50 kg
(110 lbs)

2.9 m
(9.51 ft)

2.3 m
(7.5 ft)

> Easy to transport > Ideal for breaking screed > 32amp 3 phase supply.

Brokk 50



500 kg
(1102 lbs)

590 mm
(23.2 in)

940 mm
(37 in)

0-5.5 kW

70 kg
(154 lbs)

3.1 m
(10.2 ft)

2.5 m
(8.2 ft)

> SB52 hammer > 6 times more efficient than handheld equipment > Can be transported in elevators.

Brokk 60



500 kg
(1102 lbs)

590 mm
(23.2 in)

874 mm
(34.4 in)

0-6 kW

80 kg
(176 lbs)

3.1 m
(10.2 ft)

2.5 m
(8.2 ft)

> Easy access through small doorways > Ideal for indoor and weak floors > 32amp 3 phase supply.

Brokk 90



980 kg
(2160 lbs)

780 mm
(30.7 in)

1210 mm
(47.6 in)

0-11 kW

150 kg
(331 lbs)

4.3 m
(14.1 ft)

3.7 m
(12.1 ft)

> One of the most versatile machines available > Folds into a compact package > Perfect for jobs in the metal processing industry.

Brokk 100



990 kg
(2183 lbs)

780 mm
(30.7 in)

1147 mm
(45.2 in)

0-15 kW

150 kg
(331 lbs)

4.3 m
(14.1 ft)

3.7 m
(12.1 ft)

> Unparalleled stability > Can be transported in a van > Ideal for restricted places.

Brokk 160



1600 kg
(3527 lbs)

780 mm
(30.7 in)

1254 mm
(49.4 in)

0-18 kW

270 kg
(595 lbs)

4.8 m
(15.7 ft)

4.4 m
(14.4 ft)

> Over 410 joules at the tip > State of the art digital remote > 63amp 3 phase supply.

Brokk 180



1930 kg
(4255 lbs)

1100 mm
(43.3 in)

1392 mm
(54.8 in)

0-18.5 kW

270 kg
(595 lbs)

4.9 m
(16.1 ft)

4.5 m
(14.8 ft)

> Remarkable hitting power and stability > Has track-widening kit > Small size and great strength.

Brokk 280



3150 kg
(6945 lbs)

1200 mm
(47.2 in)

1530 mm
(60.2 in)

0-22 kW

420 kg
(926 lbs)

6.2 m
(20.3 ft)

5.8 m
(19 ft)

> Outstanding all round demolition versatility > New intelligent electrical system > Rugged and robust.

Brokk 330



4500 kg
(9921 lbs)

1500 mm
(59.1 in)

1660 mm
(65.4 in)

0-30 kW

550 kg
(1213 lbs)

6.4 m
(21 ft)

6.8 m
(22.3 ft)

> Outperforms conventional excavators > Impressive power to weight ratio > 63amp 3 phase supply.

Brokk 400



5100 kg
(11244 lbs)

1600 mm
(63 in)

1792 mm
(70.6 in)

0-36 kW

600 kg
(1323 lbs)

7.1 m
(23.3 ft)

6.7 m
(22 ft)

> Reaches almost 7 metres > Can handle tools up to 600kg > Productive in open spaces.

Husqvarna comparison chart

Husqvarna

Weight

Width min

Height min

Motor output

Recommended
max weight
attachment

Vertical reach
(incl. breaker)

Horizontal reach
(incl. breaker)

DXR 140



985 kg

771 mm

854 mm

15 kW

150 kg

4.4 m

3.7 m

> Smallest, lightest member of the robots > Operates in cramped spaces > 15kw output.

DXR 250



1620 kg

780 mm

1422 mm

18 kW

230 kg

4.7 m

4.3 m

> Works off bluetooth or cable > Takes a SB202 hammer > Up to 100 metre range.

DXR 310



1960 kg

780 mm

1035 mm

22 kW

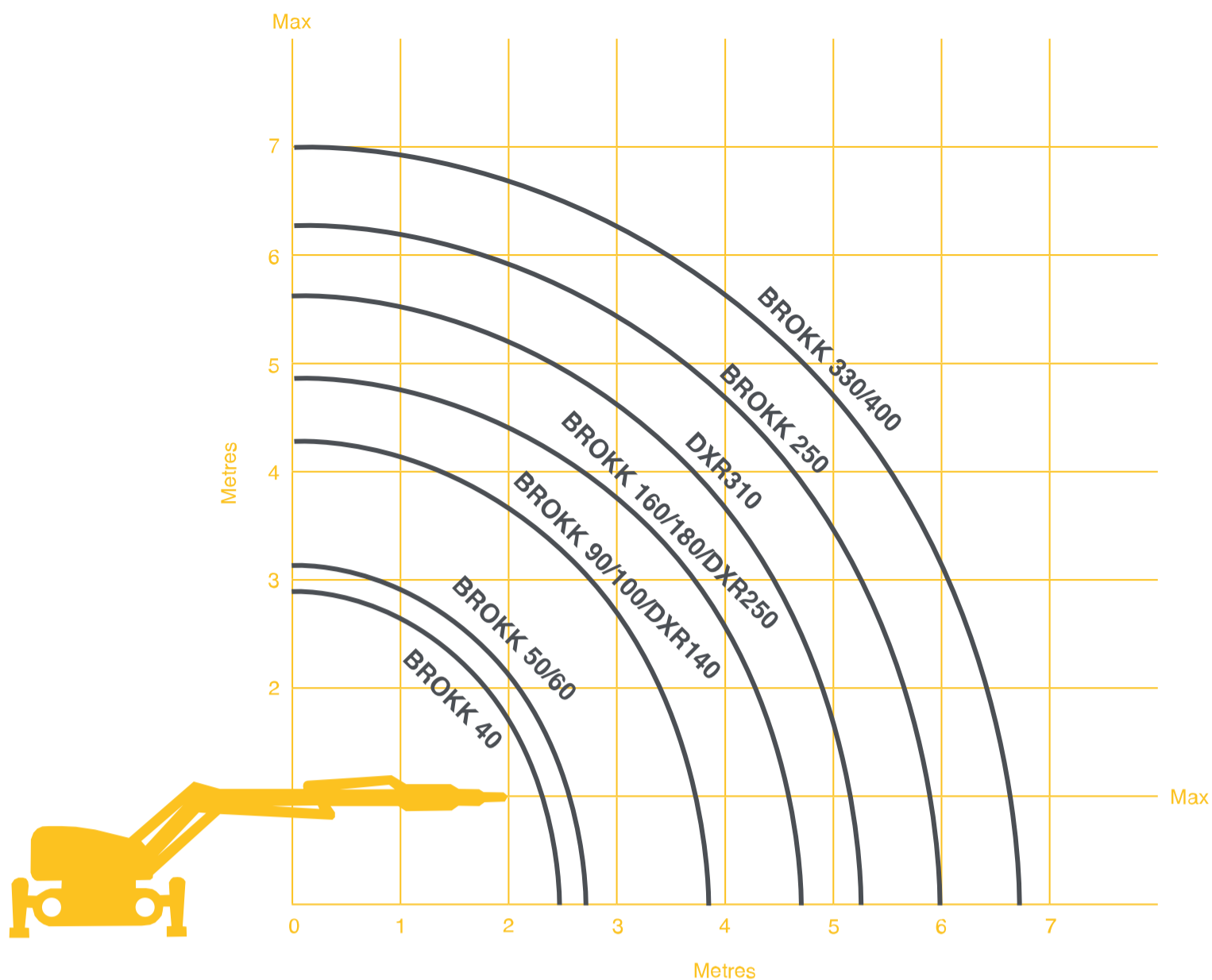
270 kg

5.2 m

4.9 m

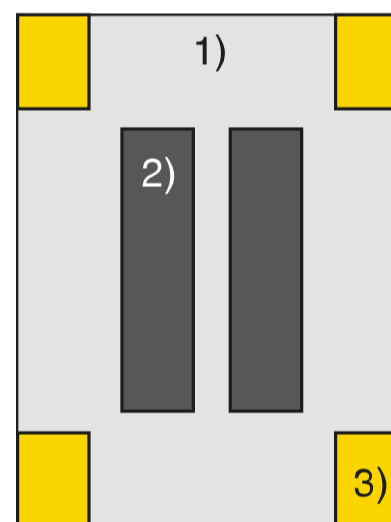
> Has telescopic arm for extra reach > Outrigger legs for stability > 63amp 3 phase power supply.

Brokk / Husqvarna ranges



Brokk floor capacity load

	Propagated load (kg/m ² 1)	Load from tracks (kg/m ² 2)	Max. point load from outriggers (kg) 3)
Brokk 40	650	2100	750
Brokk 50	356	2806	795
Brokk 90	422	3313	1019
Brokk 100	437	3434	1432
Brokk 160	458	3894	1998
Brokk 180 flaps	605	4809	3007
B180 dozer	942	4596	2731
B180 long	667	4596	3007
Brokk 260	644	4335	4313
Brokk 330E	718	5389	4913
Brokk 400	773	5944	8418
Brokk 800	1080	7129	20171



1. Machine weight including standard hammer divided by area enclosed by outrigger support points.
2. Machine weight including standard hammer divided by track contact surface.
3. Max point load measured at tip over load.

Note: all values are static loads - numbers are subject to change without notice. Please consult with the engineer at the site - Robore Hire assumes no liability for accidents.